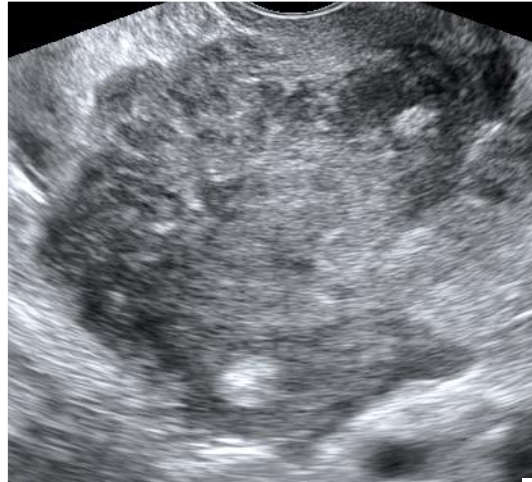




# The IOTA simple rules

## Malignant features



**Irregular solid**



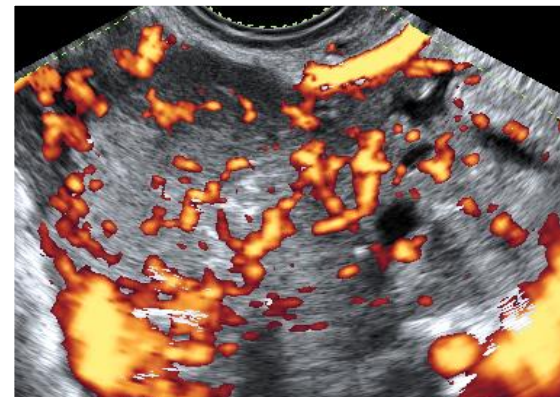
**Irregular multilocular solid**  
**≥100 mm**



**≥4 papillations**



**Ascites**

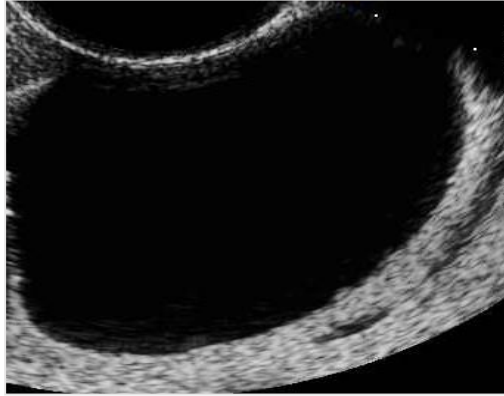


**Very rich vascularization**  
**Color score =4**

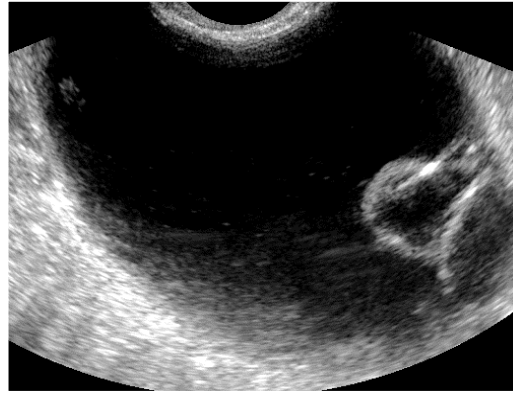


# The IOTA simple rules

## Benign features



**Unilocular cyst**



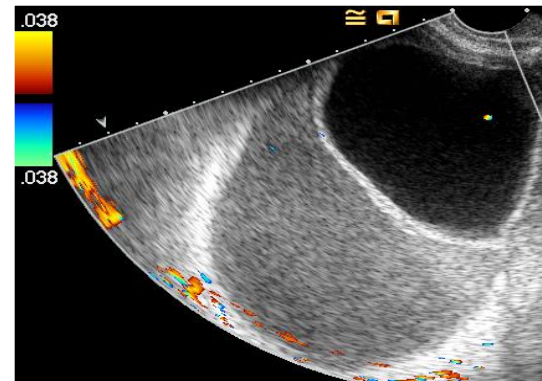
**Smooth multilocular tumor <100 mm**



**Largest solid component <7 mm**



**Shadows**



**No detectable flow (Color score = 1)**